

Conditions of the cornea - Fuchs' endothelial dystrophy (FED) and pseudophakic bullous keratopathy (PBK)

Ophthalmology Department

Last reviewed: February 2026

Next review: February 2029

Information for Patients

Leaflet number: 228 Version: 3

What are FED and PBK?

Fuchs' endothelial dystrophy (FED) and pseudophakic bullous keratopathy (PBK) are both diseases of the transparent layer that makes up the front of the eye (cornea).

This happens when there is a loss of cells from the inner most layer of the cornea. This layer stops the cornea from swelling up with fluid.

FED is a genetic condition that is more common in females and with age.

PBK happens as a complication after cataract surgery.

The diagram to the right shows the layers of the cornea. The endothelium layer is where the cells are lost.

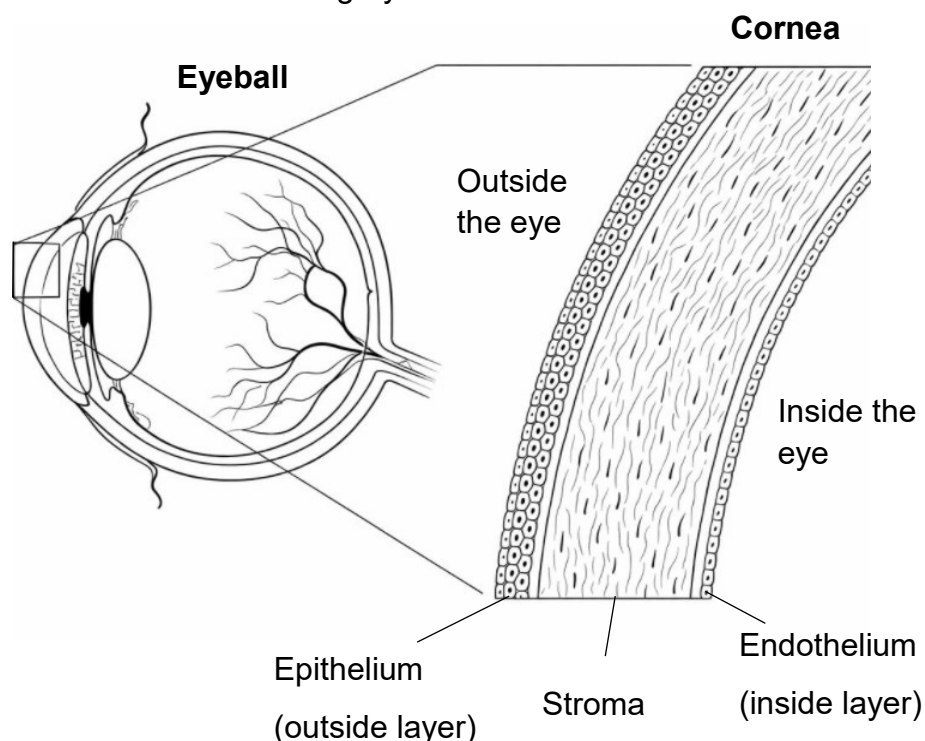


Diagram has been generated using AI.

Health information and support is available at www.nhs.uk
or call 111 for non-emergency medical advice

Visit www.uhleicester.nhs.uk for maps and information about visiting Leicester's Hospitals
To give feedback about this information sheet, contact uhl-tr.informationforpatientsmailbox@nhs.net



How are FED and PBK diagnosed?

You may:

- have a slow loss of vision (often worse in the morning).
- see halos around lights.
- feel grittiness and pain.
- have sensitivity to light.
- have watery eyes.

Your doctor will look for:

- small bumps (guttata) on the inside of your cornea.
- swelling of your cornea.
- scarring on your cornea.

How can FED and PBK be treated?

Early on, these diseases may not cause symptoms. Your doctor will monitor the condition still. Mild symptoms can be treated with simple measures. To dry the cornea, use a hair dryer to blow warm air on the eyes. Or use concentrated drops/ ointment (sodium chloride 5%) on the eye.

If the disease becomes more severe, it can be treated with special contact lenses (bandage contact lenses) or surgery to replace the damaged layers of the cornea (corneal graft).

More information

www.rnib.org.uk/your-eyes/eye-conditions-az/fuchs-endothelial-corneal-dystrophy/

Contact details

If you have any questions about your condition, please contact the Corneal Specialist Nurse.

Tel: **0797 094 0125** (Monday to Friday, 9am to 5pm).

اگر آپ کو یہ معلومات کسی اور زبان میں درکار ہیں، تو براہ کرم مندرجہ ذیل نمبر پر ٹیلی فون کریں۔
على هذه المعلومات بلغة أخرى، الرجاء الاتصال على رقم الهاتف الذي يظهر في الأسفل
જો તમને અન્ય ભાષામાં આ માહિતી જોઈતી હોય, તો નીચે આપેલ નંબર પર કૃપા કરી ટેલિફોન કરો

ਜੇ ਤੁਸੀਂ ਇਹ ਜਾਣਕਾਰੀ ਕਿਸੇ ਹੋਰ ਭਾਸ਼ਾ ਵਿੱਚ ਚਾਹੁੰਦੇ ਹੋ, ਤਾਂ ਕਿਰਪਾ ਕਰਕੇ ਹੇਠਾਂ ਦਿੱਤੇ ਗਏ ਨੰਬਰ 'ਤੇ ਟੈਲੀਫੋਨ ਕਰੋ।
Aby uzyskać informacje w innym języku, proszę zadzwonić pod podany niżej numer telefonu

If you would like this information in another language or format such as EasyRead or Braille, please telephone 0116 250 2959 or email uhl-tr.equalitymailbox@nhs.net