

# Moving your child to an intensive care unit (Children’s Medical Emergency Transport)

Information for Parents and Families

Last reviewed: October 2025

Next review: October 2028

Leaflet number: 1166 Version: 3

## Introduction

Welcome to Children’s Medical Emergency Transport (COMET).

We understand that this is a very stressful time for you and your family and we aim to make your child’s transfer as easy as possible. Please ask the team any questions you have.

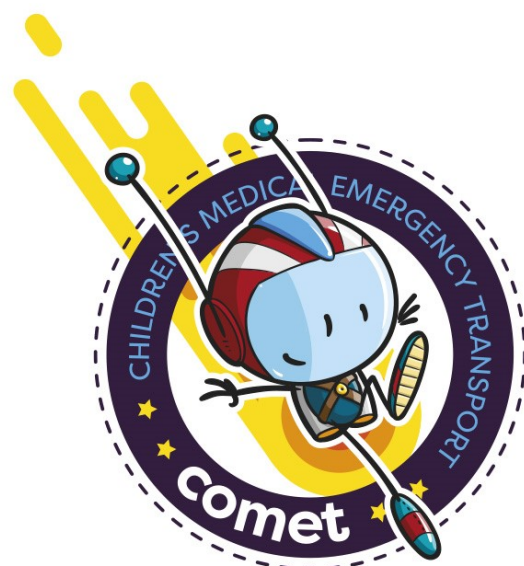
## Who are the COMET team?

The COMET team are a specialised team of experienced doctors and nurses in Children’s (Paediatric) Intensive Care. Our team are here to move your child safely to a Paediatric Intensive Care Unit within the East Midlands area.

## Involving you in your child’s care

There will be a lot of equipment with your child. This is explained on page 2. The team may also use abbreviations which you may not be familiar with; information on these can be found on page 10.

You and your family play an essential part in the care of your child and you know your child better than anyone else. So that we can give your child the best possible care, please let us know what more we can do to support them. Your child will want to see and hear you. We will encourage you to interact with them as much as you can.



**Health information and support is available at [www.nhs.uk](http://www.nhs.uk)  
or call 111 for non-emergency medical advice**

Visit [www.uhleicester.nhs.uk](http://www.uhleicester.nhs.uk) for maps and information about visiting Leicester’s Hospitals  
To give feedback about this information sheet, contact [uhl-tr.informationforpatientsmailbox@nhs.net](mailto:uhl-tr.informationforpatientsmailbox@nhs.net)

## Why does my child need to be transferred?

Children's intensive care is only provided in a small number of specialist units. Your local hospital may not have this facility.

Although your local hospital may not have this facility they will have done the necessary procedures to prepare your child for transfer.

Your child needs to be moved to a Paediatric Intensive Care Unit (PICU). A PICU gives further specialist care with nurses and doctors with experience in looking after and supporting sick and critically ill children.

## Who will be taking care of my child?

There will be many different people taking care of your child whilst being transferred. The COMET team are made up of:

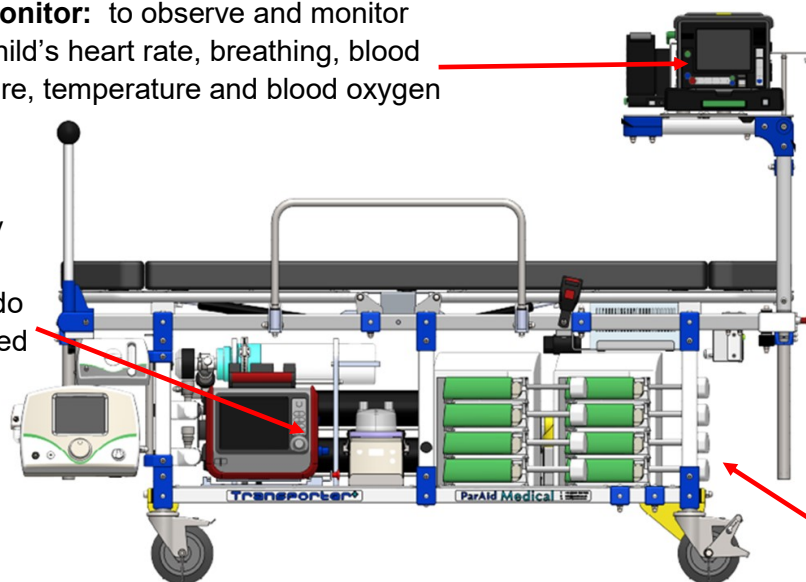
- **COMET Consultants:** senior children's doctors who specialise in intensive care and transport.
- **COMET Registrars:** doctors specialising in paediatrics including transport.
- **COMET ACPs:** advanced healthcare professionals who specialise in paediatric critical care and transporting children.
- **COMET Nurses:** specialised nurses in caring for and transporting sick children.
- **COMET Trainees:** there may also be doctors, nurses and students in training, learning about the transport team.

## What does all the equipment do?

There are a lot of different pieces of equipment around your child that will be supporting them whilst they are ill. Please ask if you are unsure or would like any more information on what the equipment does but please do not touch any of this equipment as it may affect your child's care.

**The monitor:** to observe and monitor your child's heart rate, breathing, blood pressure, temperature and blood oxygen levels.

**Ventilator:** your child may need help breathing, This machine will help them to do this (not all children will need this help whilst on PICU).



**Pumps:** to give fluids and medications

## About Nottingham PCCU

Nottingham's Paediatric Critical Care Unit (PCCU) has 14 critical care beds and cares for children of all ages, from birth to 18 years of age. It has an joint High Dependency Unit and Paediatric Intensive Care Unit.

Nottingham specialises in caring for children with breathing problems, brain conditions or kidney problems, as well as children who have been in an accident and children with cancer.

**How to find Nottingham PCCU? Please use postcode NG7 2UH**

**Direct phone number to PICU: 0115 970 9232**

For directions to car park, follow QR code:



## Directions to Nottingham PCCU:

The PCCU is located in the Queen's Medical Centre (QMC) on Derby Road. This is on the western side of the city, just on the east side (inside) of the Nottingham ring road at its junction with the A52. The A52 crosses the M1 at junction 25.

Leave the M1 motorway at junction 25, and take the 'A52 to Nottingham', past Stapleford, Bramcote and Wollaton Park. As you pass the university on your right you will come to a large traffic island with QMC on the right immediately after the island. Turn right here, take the first slip road on the left into the hospital grounds and continue along the hospital perimeter road.

## Park and Ride - Medilink:

Queen's Drive Park and Ride site is located off Queens Drive near A52, Clifton Bridge.

A Medilink bus service operates between this site and the QMC. To find using your satnav, use the postcode **NG2 1AP**.

For the latest car parking and travel information visit [www.nuh.nhs.uk](http://www.nuh.nhs.uk)

## Car parking:

The main patient and visitor parking areas at QMC are car park 1 (East Road) and car park 3 (access at the junction between East Road and South Road).

## Parking charges:

Time	Pay
0 to 15 minutes	Free
16 minutes to 1 hour	£2
1 to 2 hours	£4
2 to 4 hours	£5.50
Up to 8 hours	£6.50
Up to 24 hours	£8

These prices are correct of January 2025, there may be slight differences in the prices if these have been updated since then. You can pay by cash or card at the parking machines outside or at the car parking and security office (inside the main entrance).

1 week permits are also available from the car parking and security office. Payment is by cash or credit/ debit card. Concessions are made for visitors who need to attend hospital regularly. Please ask a member of staff for more information.

## How to find the unit:

- **From main entrance** - at the main entrance, located on B floor, turn left. Follow this corridor to the end. At the end turn left and then right where you will reach the main lift and stairs for East block (purple block).

Take the lift up to E floor. Turn left out of the lift and left again past the drinks machines. The PCCU is on your right hand side. Please ring the door bell once and a member of staff will let you in.

- **From East Block entrance** - once you have parked your car in the visitors' car park the easiest route to PCCU is to walk down Stores Road. Turn right down East Road and then enter the hospital through the East Block entrance opposite the blue railings. On entering East block you will pass an information point.

Turn right at the junction and follow the corridor until you reach the end at which point you need to turn left and turn left again, where you will reach East Block lifts.

Take the lift up to E floor. Turn left out of the lift and left again past the drinks machines. The PICU is on your right hand side. Please ring the door bell once and a member of staff will let you in.

**Out of hours this entrance may be closed, so go through main entrance.**

## Facilities for parents and carers:

Nottingham PCCU provides overnight accommodation with washing facilities close to the unit for parents. Due to the children's care needs, parents are not able to sleep at children's bedsides.

Parents' rooms will be arranged by the Family Liaison Team or nursing staff upon arrival in the unit.



## About Leicester Royal Infirmary CICU

The Children's Intensive Care Unit (CICU) at Leicester Royal Infirmary looks after children from birth to 18 years of age.

The Children's Hospital specialises in caring for children with stomach or intestinal problems, children with cancer and children with breathing conditions.

The CICU has 6 beds. It supports children with respiratory illnesses and cardiac conditions as well as after surgery.

**How to find Leicester CICU? Please use postcode LE1 5WW**

**Direct Phone number: 0116 258 6302**



**NHS**  
University Hospitals  
of Leicester  
NHS Trust

Leicester Royal Infirmary  
Infirmary Square,  
Leicester,  
LE1 5WW  
[www.leicestershospitals.nhs.uk](http://www.leicestershospitals.nhs.uk)

Disclaimer:  
While the Trust has taken care to ensure the accuracy of this map, we cannot accept responsibility for errors or omissions; nor can we guarantee that information will always be up to date. The Trust accepts no liability for any loss, damage or inconvenience caused as a result of reliance on this mapping.



## Directions to Leicester Royal Infirmary CICU:

Leicester Royal Infirmary is situated on the southern edge of the city centre of Leicester.

Directions to the hospital appear on major road signs when you exit the motorways (M69/ M1) and around the city.

The main onsite patient and visitor parking is on Havelock Street.

## Car parking:

You can pay for the car park on exit using cash or a credit/debit card.

Time	Pay
0 to 30 minutes	Free
Up to 1 hour	£1.70
1 to 2 hours	£2.90
2 to 3 hours	£3.40
3 to 4 hours	£4.50
4 to 8 hours	£6.70
8 to 12 hours	£11.30
12 to 24 hours	£13.30

### Parking charges

These prices are correct of January 2025, there may be slight differences in the prices if these have been updated since then.

Reduced weekly/ monthly parking is available. Please ask staff on the unit for a form.

Daily, weekly and monthly saver tickets are also available from the Car Park Office (Windsor Building).

For the latest car parking and travel information visit: [www.leicestershospitals.nhs.uk](http://www.leicestershospitals.nhs.uk)

## How to find the unit:

From the Havelock Street car park, follow the signs for the main entrance located in the Windsor Building.

Enter the Windsor Building where you will find main reception on your right. Continue along the corridor to the end and turn right into Balmoral Building.

Continue down the corridor and turn right into the Balmoral lift lobby. Take a lift to the 4th floor. Turn left out of the lift through the double doors and turn left again where you will find the unit on your right, in front of ward 12.

## Facilities for parents and carers:

There are 3 parent rooms available at CICU. The staff will always try to find you somewhere to stay if they are not available. All parents can help themselves to breakfast. For breastfeeding mums all meals are provided.

## About Leicester Royal Infirmary C-PICU

Cardiac Paediatric Intensive Care Unit (C-PICU) at Leicester Royal Infirmary specialises in pre and post cardiac surgery and Extra Corporeal Membrane Oxygenation (ECMO) services. This unit has 8 beds, caring for children from birth to 18 years of age.

**How to find Leicester C-PICU?** Please use postcode **LE1 5WW**

**Direct phone number: 0116 258 3288**



## Directions to Leicester Royal Infirmary C-PICU:

Leicester Royal Infirmary is situated on the southern edge of the city centre of Leicester.

Directions to the hospital appear on major road signs when you exit the motorways (M69/ M1) and around the city.

The main onsite patient and visitor parking is located on Havelock Street.

## Car parking:

You can pay for the car park on exit using cash or a credit/debit card.

Time	Pay
0 to 30 minutes	Free
Up to 1 hour	£1.70
1 to 2 hours	£2.90
2 to 3 hours	£3.40
3 to 4 hours	£4.50
4 to 8 hours	£6.70
8 to 12 hours	£11.30
12 to 24 hours	£13.30

### Parking charges

These prices are correct of January 2025, there may be slight differences in the prices if these have been updated since then.

Reduced weekly/ monthly parking is available and a form can be obtained from staff on the unit.

Daily, weekly and monthly saver tickets are also available from the Car Park Office (Windsor Building).

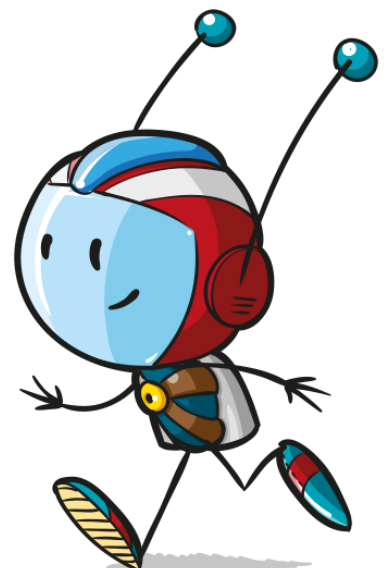
For the latest car parking and travel information visit:  
[www.leicestershospitals.nhs.uk](http://www.leicestershospitals.nhs.uk)

## How to find the unit:

Make your way to the Kensington Building (highlighted in blue on the site map). Enter through the main doors and approach the reception desk straight ahead. You will be given access to the lift lobby where you need to take the lift up to level 5. When you exit the lift you will see C-PICU is signposted; go through these double doors and turn right.

## Facilities for parents and carers:

C-PICU has access to parent rooms available nearby for you to stay in if needed. Please speak to a member of staff who will arrange this for you. Tea and coffee is kindly donated by a local charity (Heart Link). Breastfeeding mums are provided with meals free of charge.



## Will I be able to travel with my child?

There may be the chance for 2 parents to travel with us in the ambulance. This depends on staffing and vehicles. The transport team will talk to you about this, but please ask them if they don't mention it.

This may not be possible due to infection risks (for example during a pandemic). We will let you know if this is the case and will help make alternative arrangements.

If you suffer from motion sickness it may be best for you not to travel in the ambulance. If you do travel with your child you will be expected to stay seated with your seat belt fastened unless told otherwise by a member of our team.

If you are unable to travel with your child please do not try to follow our ambulance. Please ensure you travel at a safe and steady speed. Our team will give you information about the hospital your child is being taken to.

## Abbreviations explained

Abbreviation	Meaning
Access	Cannula in the vein
Art line	Arterial cannula
BM	Blood sugar
BP	Blood pressure
Cap Refill	Capillary refill
CO2	Carbon dioxide
CVL	Central venous line
ETA	Estimated arrival time
ETT	Endotracheal tube (breathing tube in windpipe)
Gas	Blood test
Inotropes	Medicine to help the heart and blood vessels
IO	Intravenous (type of cannula that goes in the bone)

Abbreviation	Meaning
IV	Intravenous (giving medicine through a cannula into the vein)
Line	Cannula in vein or artery
NIV	Non-invasive ventilation
LRI	Leicester Royal infirmary
Notts/QMC	Nottingham Queens Medical Centre
O2	Oxygen
Pump	Syringe pump
Sats	Oxygen saturation
Temp	Temperature
Trolley	Retrieval trolley that your child lies on
Tube	Endotracheal tube (breathing tube in windpipe)
Vent	Ventilator

## Concerns about your child's transfer

The transport team will be with your child throughout the journey in the ambulance. We will be observing and monitoring your child for any changes in their condition throughout the journey. We will also make regular notes on your child's condition during the journey which we will share with the team in the hospital your child is transferred to.

If you have any concerns please speak to one of the transport team before they leave in the ambulance.

## How you can help

### Just Giving page

When your child is transferred by the CoMET team, to a critical care unit, you may be given a parent/carer pack and Cosmo teddy bear. The items in these packs are funded by donations made by previous families. If you wish to help families that need our services in the future, please visit our Just Giving page using this QR code:



## Giving us your comments and feedback

We welcome any comments or feedback about our team.

We would appreciate if you could complete our parent/ carer feedback questionnaire. This is anonymous. Scan the QR code given here. It will take about 2 minutes and provides us with valuable information to help us to improve our service.

If you have any other questions, concerns or feedback, please contact our Transport Matron via the details below:

**Address:** COMET Transport Service, 10 Willow Road,  
Castle Donington, Derby DE74 2NP

**Email:** [uhl-tr.eastmidlandscomettransport@nhs.net](mailto:uhl-tr.eastmidlandscomettransport@nhs.net)

**Website:** [www.eastmidlandscomettransport.nhs.uk](http://www.eastmidlandscomettransport.nhs.uk)



Please be aware that your child's information and vital signs may be stored on the transport equipment and also remotely on an online database as part of our patient records. Be assured that all information will be stored in accordance with data protection legislation.

For this leaflet in another language, please scan this QR code:



